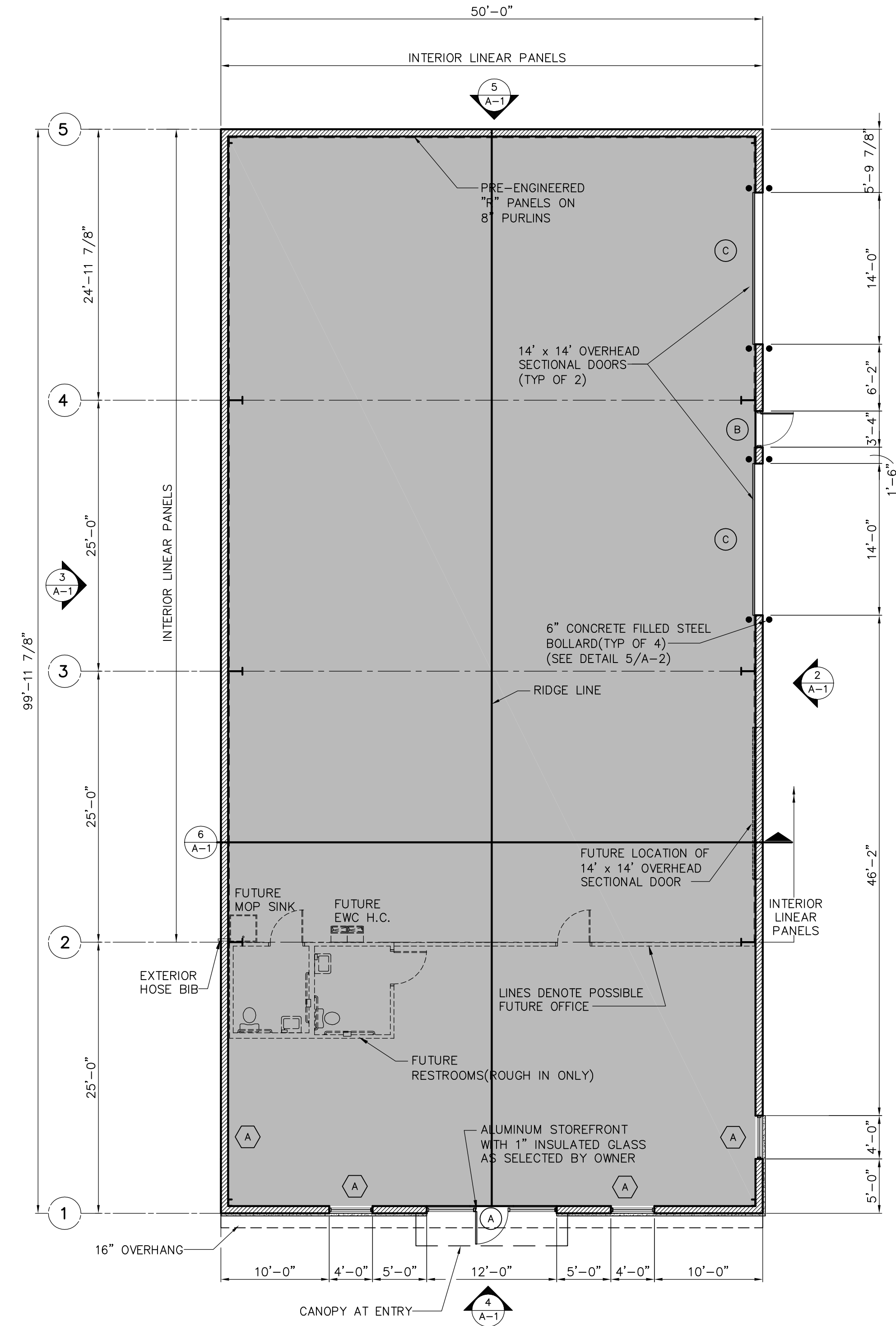
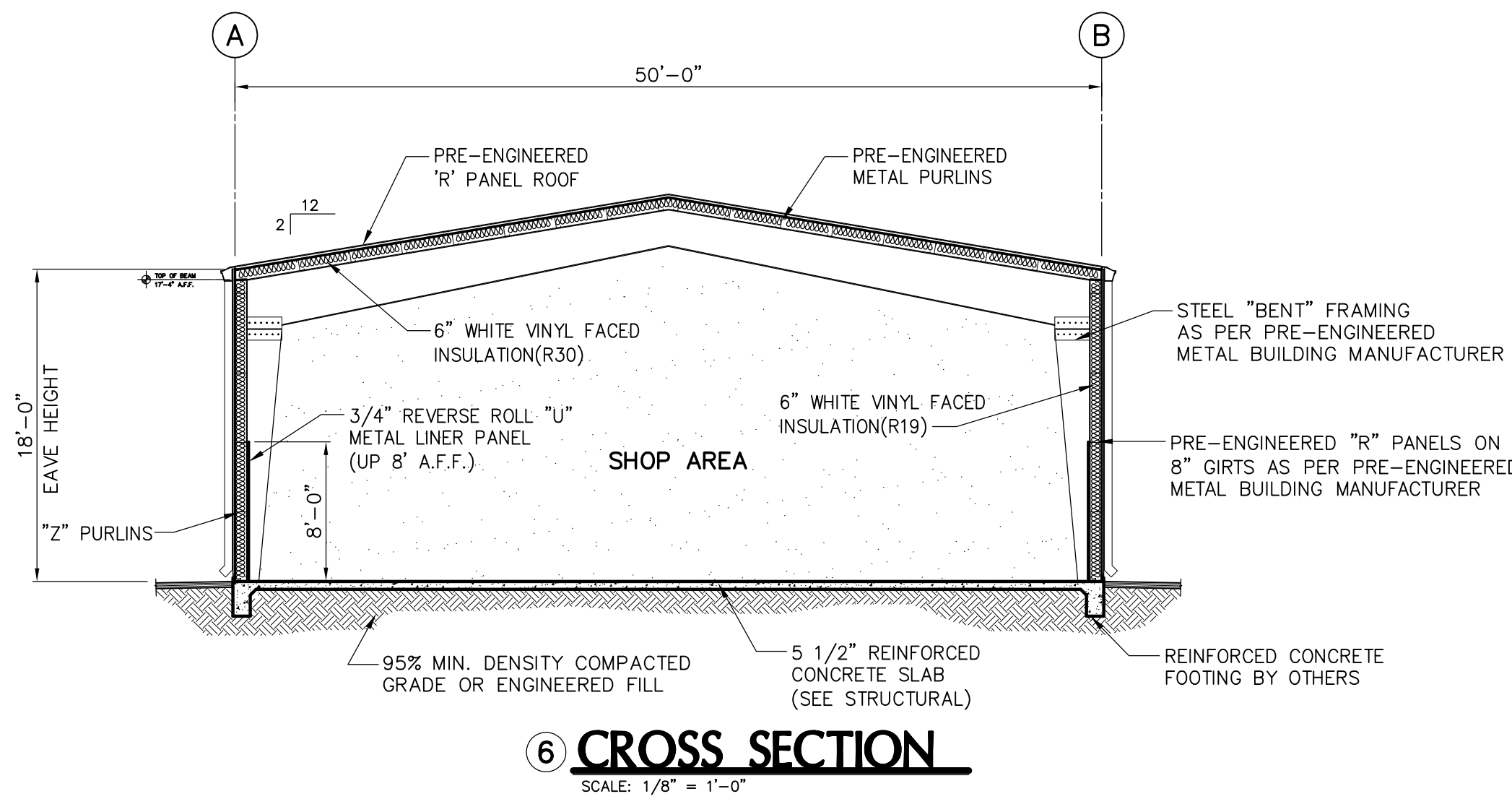
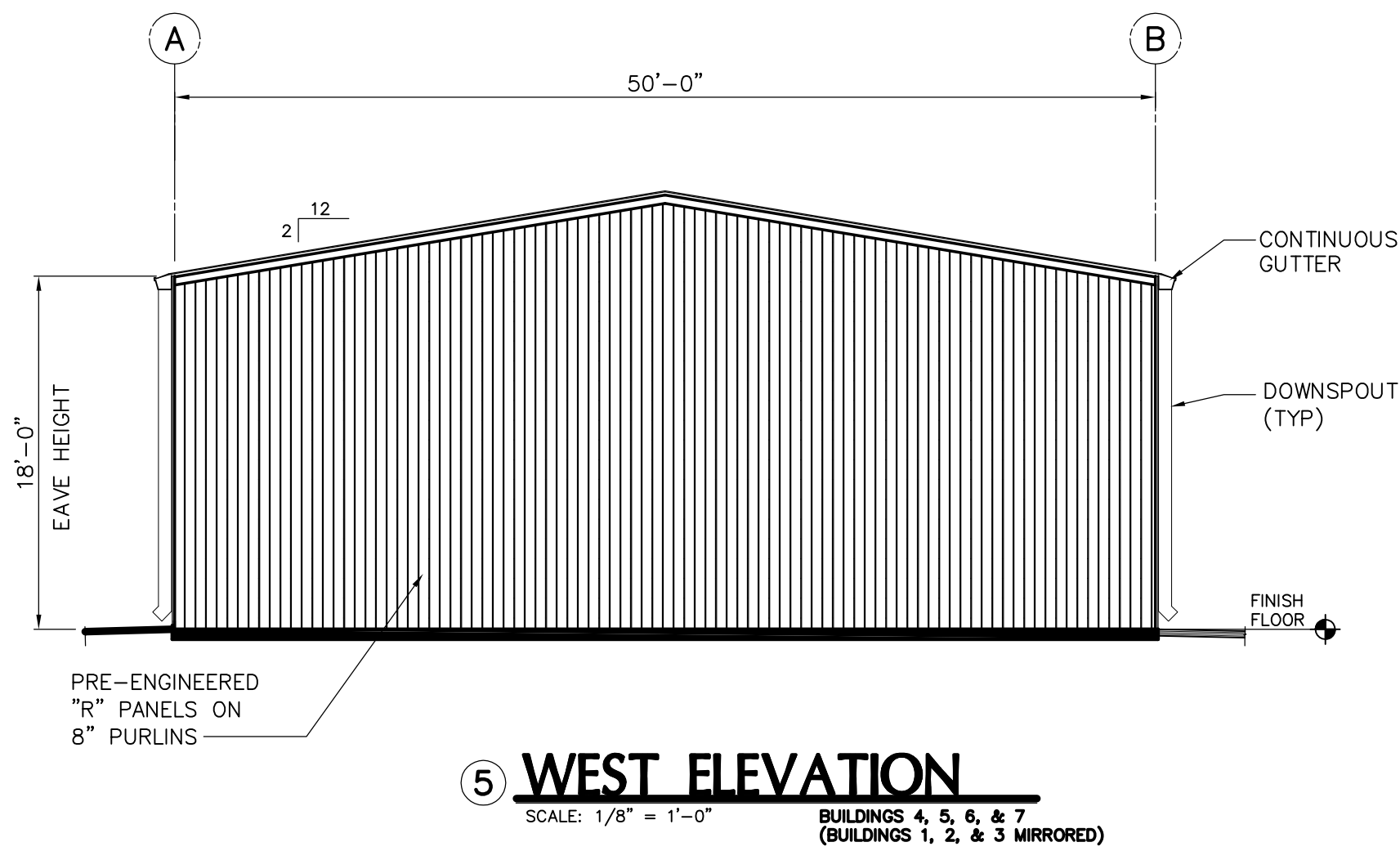
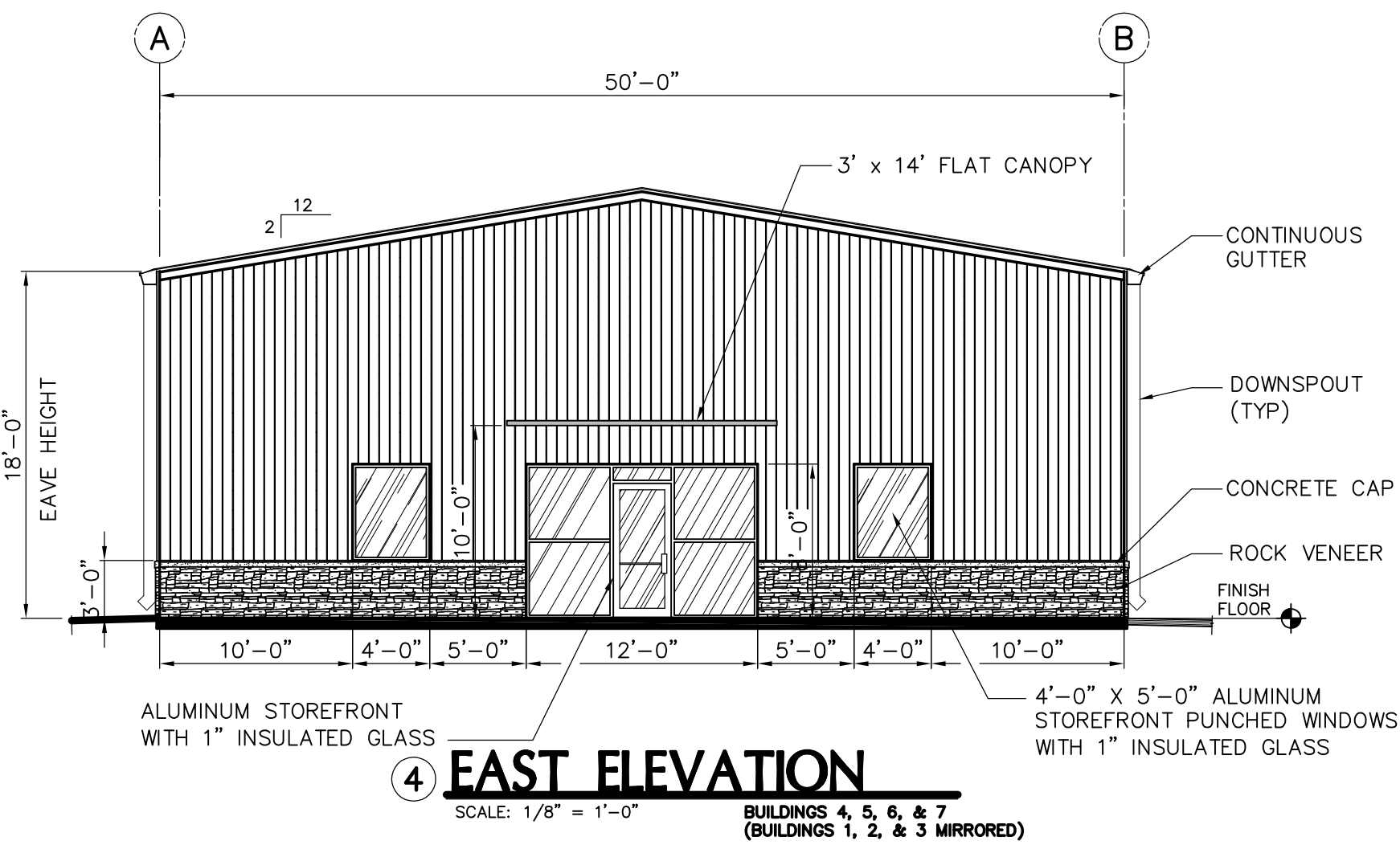
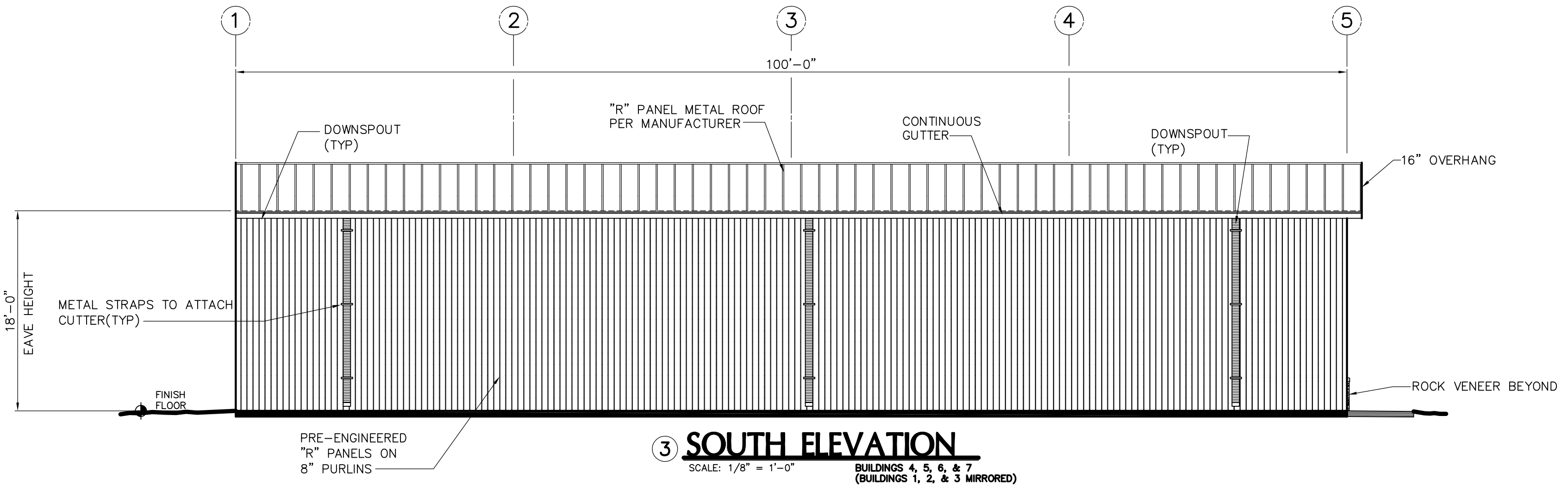
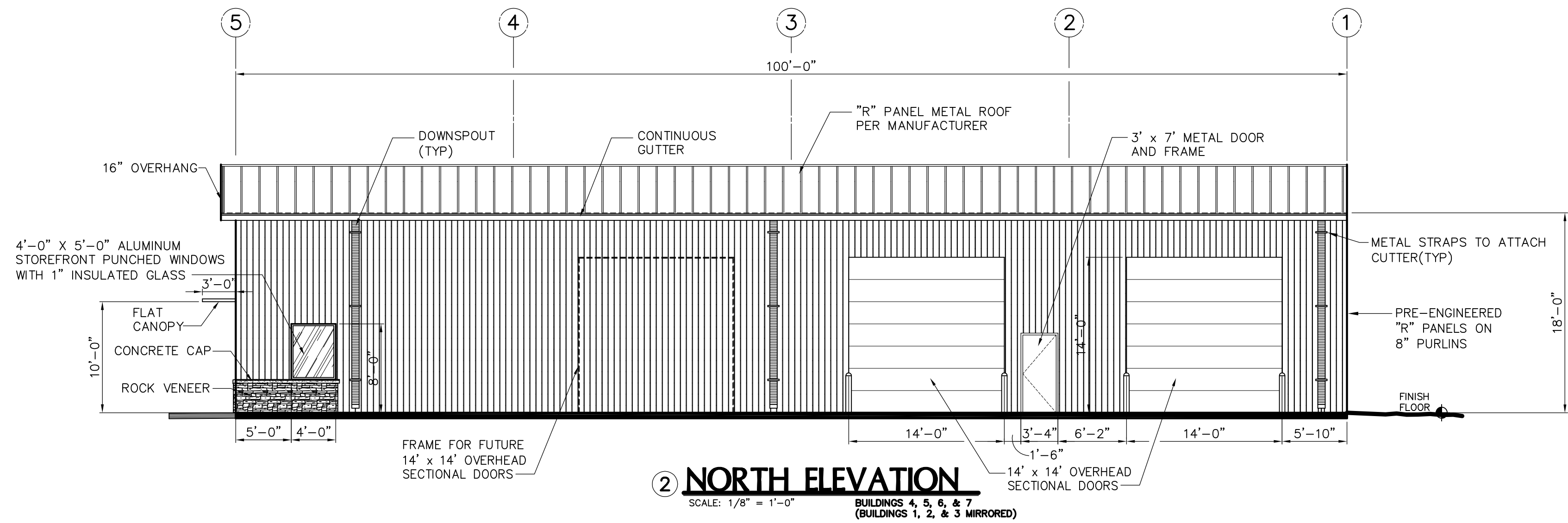




A NEW MULTI-BUILDING COMPLEX  
FOR  
**LEOPARD BUSINESS PARK**  
CORPUS CHRISTI, TEXAS  
LEOPARD & TULOSO

EL PASO, TEXAS 79912  
FAX 877-2998  
INDUSTRIAL GROUP, INC.  
1845 NORTHWESTERN DRIVE, SUITE A  
915 877-2020  
PSRBB

COMMISSION No.  
14-112  
DATE 10/14/2014  
Rev.  $\Delta$   
 $\Delta$   
SHEET: **A-1**  
1 OF 2



**NOTE:**  
GENERAL CONTRACTOR TO PROVIDE ALL UNDER FLOOR PLUMBING ROUGH IN AS PART OF SHELL CONSTRUCTION.

**4,994 SQ. FT.(TYP)**

**ISSUED FOR CONSTRUCTION**

This document, whether in hard copy or machine readable format, is copyrighted and an instrument of service in respect to the project for which it was prepared. The document is not intended or authorized for reuse by any party on extensions of such project or any other project. Any reuse, including copying and/or modifying the document, without written permission from PSRBB Industrial Group, Inc. for the specific purpose intended is a violation of federal copyright law. Unauthorized use of this material may result in civil and/or criminal penalties.